

EN

# SYNC CARBON RACE BAR USER MANUAL

Version: 07-2024

**FLYSURFER**

## CONTENT

<b>01</b>	<b>Release of Liability</b> .....	<b>4</b>
<b>02</b>	<b>Safety Notes</b> .....	<b>5</b>
02.01	Do not fly with kites.....	5
<b>03</b>	<b>Overview of the Control Bar</b> .....	<b>6</b>
03.01	SYNC Race Carbon Bar with Front Line Safety.....	6
<b>04</b>	<b>Safety System</b> .....	<b>8</b>
<b>05</b>	<b>Quick Release</b> .....	<b>8</b>
05.01	Activating the COMPACT Quick Release .....	8
05.02	Assembly of the COMPACT Quick Release.....	8
05.03	Harness Connection .....	8
05.04	Safety Leash .....	9
05.05	Attaching the Safety Leash.....	9
05.06	Activating the Safety Leash.....	9
<b>06</b>	<b>Unwinding and sorting of the flying lines</b> .....	<b>9</b>
<b>07</b>	<b>Connecting the Front- and Back-Lines with the kite</b> .....	<b>10</b>
07.01	Connecting the bar to a Foilkite .....	10
<b>08</b>	<b>Glide Trimmssystem</b> .....	<b>10</b>
08.01	Depowering with the Clam Cleat Adjuster.....	10
08.02	Powering up with the Clam Cleat Adjuster.....	10
<b>09</b>	<b>Control Bar Care</b> .....	<b>11</b>
<b>10</b>	<b>Maintenance</b> .....	<b>11</b>
10.01	Measuring.....	11
10.02	Extend a Steering Line.....	12
10.03	Exchange the Safety Line .....	12
<b>11</b>	<b>Repair &amp; Spare Parts</b> .....	<b>13</b>

## 01 RELEASE OF LIABILITY

### Release of liability, claim waiver, assumption of risk

By assembling and/or using this FLYSURFER product, you agree that you have read and understood the entire FLYSURFER product manual, including all instructions and warnings contained in that user manual, prior to using the FLYSURFER product in any way. You additionally agree that you will ensure any additional or subsequent user of your FLYSURFER product will read and understand the entire FLYSURFER product user manual, including all instructions and warnings contained in that user manual, prior to allowing that person to use your FLYSURFER product.

### Assumption of Risk

FLYSURFER product and any of its components involve certain risks, dangers, and hazards that can result in serious personal injury and death to both the user and to non-user third parties. In using this FLYSURFER product, you freely agree to assume and accept any and all known and unknown risks of injury and you and third parties while using this equipment. The risks inherent in this sport can be greatly reduced by abiding by the warning guidelines listed in this user manual and by using common sense.

### Claim Wavier

*Release and waiver of claims in consideration of the sale of the FLYSURFER product to you, you hereby agree to the fullest extent permitted by law, as follows:*

To waive any and all claims, that you have or may in the future have against Skywalk GmbH & Co. KG and all related parties resulting from use of the FLYSURFER Product and any of its components. To release Skywalk GmbH & Co. KG and all related parties from any and all liability for any loss, damage, injury or expense that you or any users of your FLYSURFER product may suffer, or that your next of kin may suffer, as a result of the use of the FLYSURFER product, due to any cause whatsoever, including negligence or breach of contract on the part of Skywalk GmbH & Co. KG and all related parties in the design or manufacture of the FLYSURFER product and any of its components. In the event of your death or incapacity, all provisions contained herein shall be effective and binding upon your heirs, next of kin, executors, administrators, assigns, and representatives. Skywalk GmbH & Co. KG-related parties have not made and expressly deny any oral or written representations other than what is set forth herein and the FLYSURFER User's Manual.

If you have any questions (repair, replacement parts installation, tuning, etc.) the dealers you trust get faster help and correspondingly cheaper support (e.g. by saving shipping costs).

You can find all dealers in your area via our partner map:

<https://flysurfer.com/fs-partner/>

If you need further help, you can reach us at headquarters by phone or email.

E-Mail: [support@flysurfer.com](mailto:support@flysurfer.com)

Phone: +49 (0) 8641 6948 0

## 02 SAFETY NOTES

**Read** the online user manual and the Bar Safety Guide **thoroughly before using** the SYNC Race Carbon Bar, and strictly follow the procedures noted. **The following safety guidelines are only guidelines and do not claim to cover every instance.**



The user is solely responsible for himself and others when using this product. They must check all parts – especially the lines, wear parts, and the safety system (Quick Release) – for condition and functionality before and after each use. Before each launch, the COMPACT Quick Release must be activated and closed again.

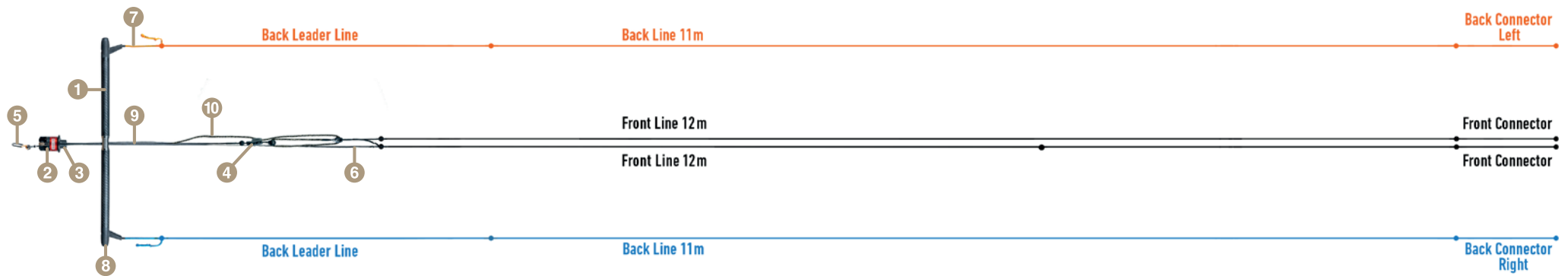
01. Kitesurfing is a potentially **dangerous sport**, that holds risks for the athlete or the people surrounding them. Incorrect use of this product may result in serious injury or **even death** for the user or third parties. Every user should be **qualified/ trained** by a FLYSURFER kiteschool or a FLYSURFER dealer.
02. The product may only be used with **original spare parts**, and may not be modified
03. This product has been designed for riders weighing 35-120kg. We cannot guarantee the proper functioning of the product outside of this weight range.
04. Never kite in unsuitable conditions such as storm fronts, lightning, or offshore winds. Check the weather and wind conditions carefully and choose the according kite size.
05. Check out the kiting spot beforehand. Make sure you are aware of any risks such as obstacles, shallows, currents and bans. Also be aware if a rescue craft can get to you in case of an emergency. It is always best to ask people (locals) who know the area well.
06. Keep a safety margin of at least two line-lengths downwind of you, and never kite near people or obstacles. Kiting near power-lines, roads, airports, cliffs, etc. is extremely dangerous.
07. Make sure that someone is looking out for you and that help is there if you need it. Never go out alone. Never kite further away from shore than you can swim back.
08. The incorrect usage of lines creates a high risk of injury for yourself as well as others. Body parts that get caught in the lines of the kite may suffer from severe injury or burns.
09. Only use SYNC Race Carbon Bars with a safety system (quick release) that you can engage in emergency situations. Use a kite leash with a safety system (quick release) so that you can disconnect your body from the product in case of an emergency.

### 02.01 Do not fly with kites

A kite is not designed, tested or licensed as an aircraft or flying device. The use of a kite as a flying device is illegal and not covered by insurance. **Flying with this product can lead to death!**

## 03 OVERVIEW OF THE CONTROL BAR

### 03.01 SYNC Race Carbon Bar with Front Line Safety



#### 1 CARBON BAR STICK WITH TITANIUM CENTER

Ultra-light, high-quality bar stick for a direct bar feel.

#### 2 COMPACT QUICK RELEASE

Compact quick release system that brings the Control Bar closer to the body to increase the depower travel.

#### 3 INTEGRATED BALL BEARING SWIVEL

Untwisting function integrated into the COMPACT Quick Release to increase comfort and minimize wear.

#### 4 GLIDE TRIM SYSTEM

Low-resistance, extremely precise and smooth trim system. Easily replaceable after heavy use.

#### 5 SAFETY LEASH CONNECTOR

Line for connecting the safety leash.

#### 6 SAFETY LINE

Line that guides the SYNC Carbon Race Bar after release. Easily replaceable after heavy use.

#### 7 WINDER LINE WITH LOOP

Replaceable winder line with knot ladder to extend the steering lines.

#### 8 WINDER END CAPS

Caps with elastic band for securing the rolled-up flying lines.

#### 9 DEPOWER LINE

Line to guide the Control Bar. Connects the COMPACT Quick Release with GLIDE TRIM SYSTEM.

#### 10 TRIM LINE

Line for adjusting the depower via the Clam Cleat. Three markings for shortening the line if necessary..

## 04 SAFETY SYSTEM

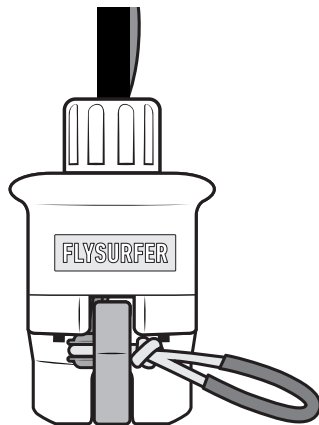
The COMPACT Quick Release allows for an aerodynamic body position with dimensions of 80 mm in height and 50 mm in diameter. The titanium hook provides a secure attachment and reliable functionality. The push-away ejection mechanism is race- and freeride-proven.

The COMPACT Quick Release is not designed for users who practice unhooked (disconnecting the system from the harness) maneuvers or any soaring/flying application. This Safety System is designed to be used exclusively in combination with a SYNC Carbon Race Bar and a ring supplied by FLYSURFER. The COMPACT Quick Release is designed for experienced riders and professional athletes and may only be used for kite sports on water.



*Their function below 0° C or 32 ° F temperatures is not guaranteed.*

To avoid operating errors, knowing everything about the handling and functions of the Quick Release is essential; carefully study these instructions.

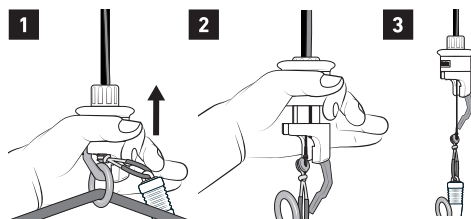


**NOTE:** Before kiting, check the Quick Release system (QR) for functionality and perform a test release. The QR must be clean and free of dirt, sand, or ice to ensure full functionality. Ensure that nothing is wrapped around, stuck to, or glued to the QR.

## 05 QUICK RELEASE

### 05.01 Activating the COMPACT Quick Release

To detach yourself from the kite in an emergency, the red/orange release crown needs to be pushed away from the body.



This will open the chicken-loop and the SYNC Carbon Race Bar will slide towards the kite on the safety line. The kite falls and flags out safely with minimal residual pull on the safety line.

### 05.02 Assembly of the COMPACT Quick Release

Slide the release crown up and rotate the hook upwards. Then slide the release crown back down.

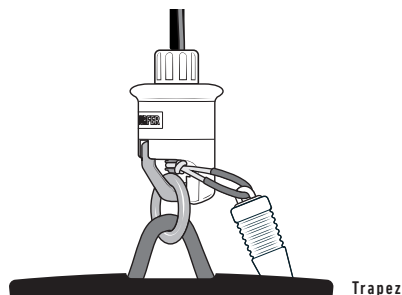
### 05.03 Harness Connection

The harness connection point that connects the COMPACT Quick Release must be a 22x23 mm forged stainless steel ring. This high load O-ring is included in the scope of delivery.

Any sort of other connectors on the harness side (hooks, ropes, soft loops, d-rings etc.) are inappropriate and will void any claim for no proper working or warrant.

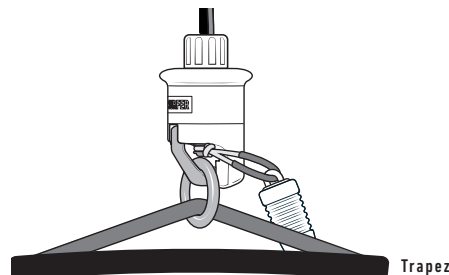
### Fixed Attachment Point

We recommend connecting the COMPACT Quick Release, as shown in the picture, to a fixed attachment point.



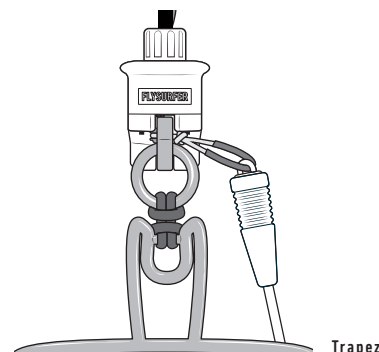
### Sliding Rope Harness

Insert the O-ring into the sliding rope of the harness plate and attach the COMPACT Quick Release as shown.



### Classic Harness Hook

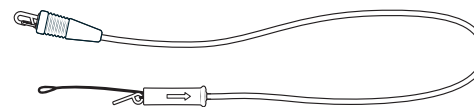
Loop the O-ring into a self-contained Dyneema line. After the O-Ring is knotted to the classic hook, connect the COMPACT Quick Release to it.



### 05.04 Safety Leash

The safety leash must be correctly attached to the Safety Leash Connector below the COMPACT Quick Release before launch.

The safety leash has a carabiner that is protected by an EVA cover. The EVA cover prevents the carabiner from accidentally getting caught in lines or similar and protects against possible injuries. The safety leash also has a safety system (quick release) at the other end. After activating this, you can completely separate yourself from the kite in an emergency situation.



### 05.05 Attaching the Safety Leash

Insert the end of the grey leash line through the harness's metal ring. Insert the release in the small loop at the end of the grey leash line. Hold the release handle with one hand while folding the release pin towards it. Pull on the handle far enough to allow the release pin to enter it. Let go of the handle.



**IMPORTANT:** Correct installation of the safety leash on the harness (side or front) as described above is critical. Incorrect assembly can be life-threatening in emergencies! Refer to the harness user manual to learn where to attach the safety leash on it.

### 05.06 Activating the Safety Leash

Grasp the release handle and push it away from your body. Let go of the release handle to completely separate yourself from your kite.

## 06 UNWINDING AND SORTING OF THE FLYING LINES

- 1 Lay the lines loosely on the ground while unwinding.
- 2 Slide the lines through your fingers and check for knots or damaged areas.



- 3 Lay the front and back lines out flat on the ground, fanned out.

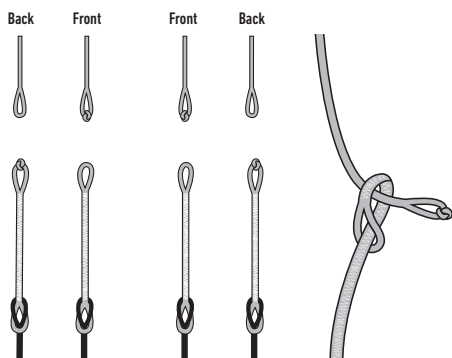
Pay attention to the color coding when connecting the control bar to your FLYSURFER kite.

## 07 CONNECTING THE FRONT- AND BACK-LINES WITH THE KITE

### 07.01 Connecting the bar to a Foilkite

Start at the canopy and hold the front lines up for an optical check of the bridle. Check the bridle levels from A-Z.

Sort the mixer and connect your grey front lines to the attachment points on the kite below the mixer with a larkshead on the ring provided. The same method is used on the color-coded backlines and their associated attachment points.



## 08 GLIDE TRIM SYSTEM

### Depowering with the Clam Cleat Adjuster

Drag the black-grey trim line towards your body to regulate the power of the kite. Release the trim line and it will jam in the teeth of the Clam Cleat.

### Powering up with the Clam Cleat Adjuster

Pull the black and grey trim line a little towards your body. To release the trim line from the teeth of the clam cleat, move it away from the clam cleat at the same time. Let the trim line slide back until the desired power is restored in the kite. Clamp the trim line back into the teeth or let the trim line slide completely back to its original position to regain the full power of the kite.



## 09 CONTROL BAR CARE

FLYSURFER Control Bars stand for innovation, functionality, and high-quality workmanship. Their lifespan can be increased significantly with the right care.

*Any discoloration of the Control Bar can be attributed to environmental factors, mechanical stress, UV radiation, and soiling. Discoloration does not affect the control bars functionality.*

### Prevention

FLYSURFER recommends a thorough check of all individual parts immediately before and after using the Control Bar. Avoid contact with sharp-edged objects, strong UV exposure and long storage times when wet.

*Check the functionality of the quick release system and avoid soiling, silting and icing.*

### Drying

To avoid mold stains, discoloration or, in extreme cases, mold, the Control Bar must be packed dry. The function of the control bar is not restricted by this.

### Rinsing

The Control Bar should be rinsed with clean, fresh water after several days of saltwater use. The use of cleaning agents damages the coating of the Control Bar parts and voids the warranty.

### Check

Check all Control Bar parts for wear before each use. Material breakage can lead to emergencies or injuries.



*Each FLYSURFER Control Bar has different breaking loads. The recommendations on our website must be followed.*

## 10 MAINTENANCE

The main parts to check for wear on a FLYSURFER Control Bar are all lines, all elastics, pulleys, line connectors and the grip. Depending on usage, lines or other components must also be serviced during the life of your Control Bar. Failure to maintain the kite can cause further damage and void the warranty.

### 10.01 Measuring

Dirt and heavy use can shorten flying lines and the safety end line. A bar setup check and measurement of the flying lines is recommended at regular intervals.

**1** To measure the flying lines of the SYNC Race Carbon Bar unwind and sort them. Find a fixed point (rod, eyelet) and fix the bar in the powered state with the help of the safety leash or another line.



**2** Attach the safety leash to the depower line to keep the Control Bar powered.



**3** Check if the adjuster is fully open.



*Use two pens or screwdrivers to measure the flying lines.*

- 4 Take the front lines in one hand and the steering lines in the other hand and thread a pen (or screwdriver) through the end of each line (pigtails).



- 5 Now tension the flying lines with approx. 10 kg. Hold the front and steering lines side by side and compare the line length.



- 6 If you notice a difference, use the knot ladder to lengthen or shorten the steering lines as described in the next point „Lengthening or shortening the steering lines“. All flying lines must be of the same length.

## 10.02 Extend a Steering Line

- 1 Open the lark's head knot.



- 2 Move the knot by one or two positions. Tighten the connection.



- 3 Repeat this process on the other side of the Control Bar.

*Choose the same position on both sides and make sure the knot of the steering leader line is on top of it.*

## 10.03 Replacing the Depower & Safety Line

When the depower line or the safety line needs to be replaced, use parts exclusively provided by FLYSURFER. Parts from other manufacturers may impede the system's proper functioning.

### Depower Line

- 1 Loosen the two screws on the bottom plate spinner with a 2mm hex key.



- 2 Make sure that all parts are present: two screws, the bottom plate spinner, and the dogbone.



- 3 Guide the depower line through the entire release system, ensuring that the dogbone goes into the eyesplice loop of the depower line.



- 4 Insert the dogbone into the bottom plate spinner and place the two screws into the holes.



- 5 Place the assembled bottom plate spinner into the cavity and tighten the screws (torque: 0.5 Nm - finger tight).

### Safety Line

- 1 Guide the safety line through the entire release system.



- 2 Attach the safety line swivel to the safety line with a lark's-head knot.



- 3 Pull the safety line up to ensure that the swivel sits in place correctly. This is the default setup while using this product.



## 11 REPAIR & SPARE PARTS

Repairs can be done at either our workshop in the head office, or by a FLYSURFER sales partner who offers repair services. High-quality original spare parts for all our Flysurfer products can be ordered directly from our Online-Shop: [shop.flysurfer.com](http://shop.flysurfer.com)

**FLYSURFER**

FLYSURFER  
Brand of Skywalk GmbH & Co. KG  
Windeckstr. 4  
83250 Marquartstein, GERMANY

For further information please visit: [www.flysurfer.com](http://www.flysurfer.com)