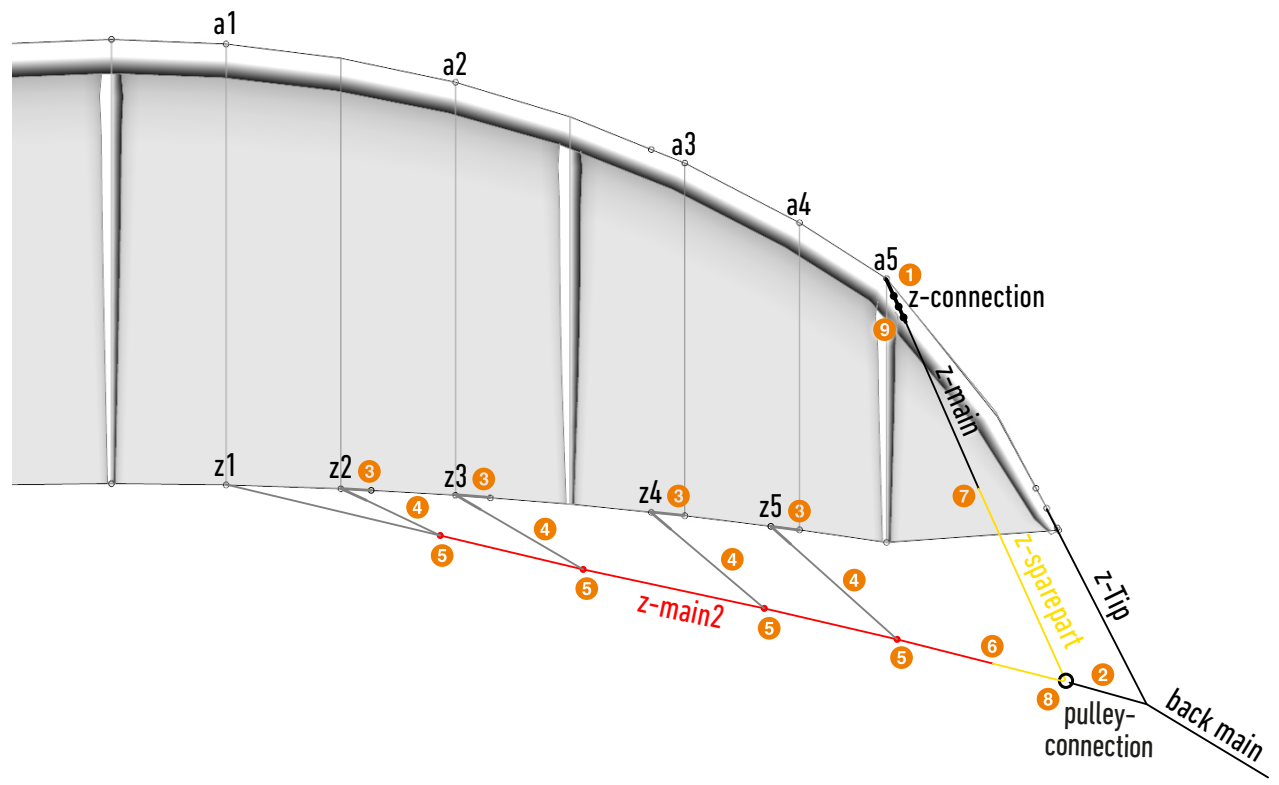




FLYSURFER
KITEBOARDING

ADAPTIVE AIRFOIL BRIDLE

BOOST3



ADAPTIVE AIRFOIL BRIDLE

What is the Adaptive Airfoil Bridle?

Profile adjustment – like sailing or on airplane wings – is the idea behind the Adaptive Airfoil System. A minimalistic trailing edge bridle makes it possible to adjust the profile of the kite during flight. This is especially noticeable on the excellent low end or when re-launching. The Adaptive Airfoil Bridle is included with the BOOST3 sizes 13 & 15 LW, optional available for size 11, making them ideal for hydrofoiling.

01. Mount z-connection line to a5 loop

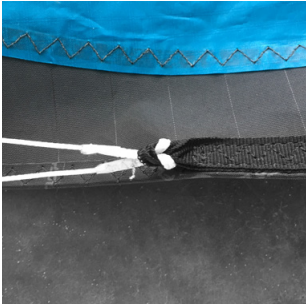


02. Add low-friction ring with pulley-connection loop to back main line

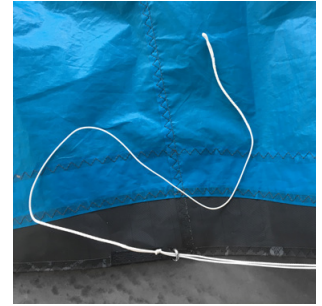
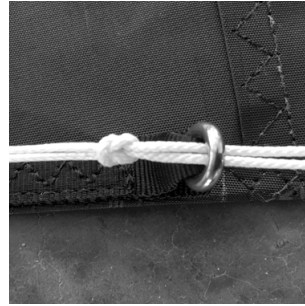


INSTALLATION INSTRUCTIONS

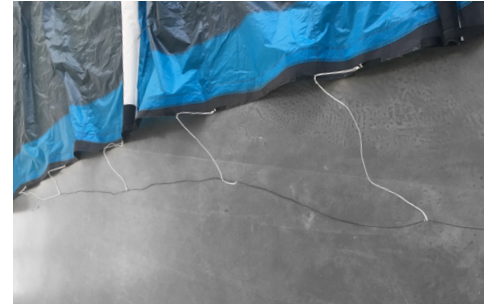
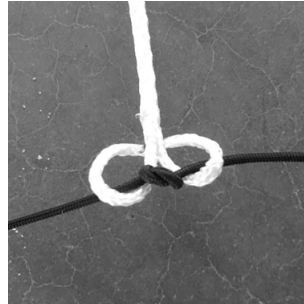
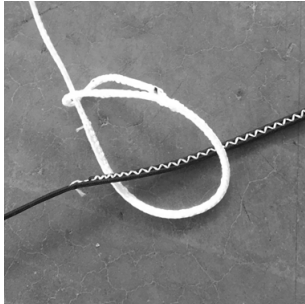
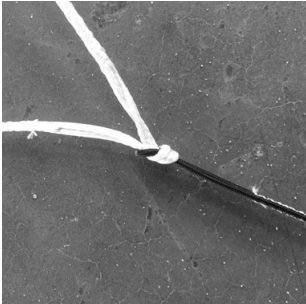
03. Connect all loop lines to trailing edge loops



04. Mount top lines z1 through z5 to loop lines



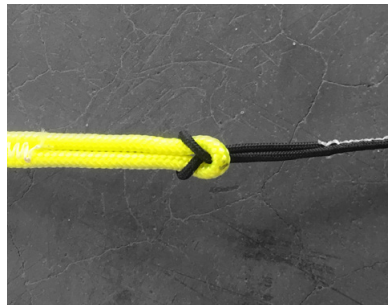
05. Mount z-main2 to z1 and z2 top line, and connect z3 through z5



06. Connect z-sparepart to z-main2



07. Connect z-main to z-sparepart



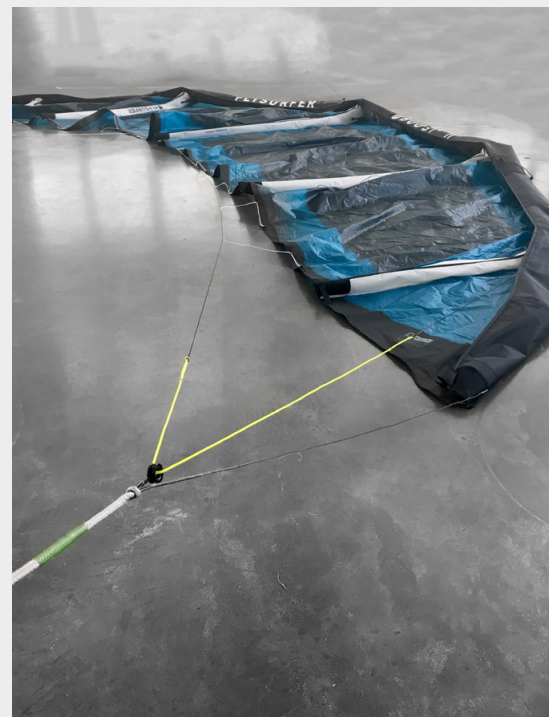
08. Slide the z-main line through the low-friction ring



09. Fix z-main line to z-connection line on the middle knot position



Finished mounted Adaptive Airfoil Bridle



FLYSURFER Kiteboarding
Brand of Skywalk GmbH & Co. KG
Windeckstr. 4
83250 Marquartstein, GERMANY

WEBSITE: www.flysurfer.com
MAIL: info@flysurfer.com

Adaptive Airfoil Bridle Instructions 05-2018 / data subject to change



